



Opening Schools Facilities: Survey Analysis

February 2020



Insight produced by

Active
Black Country



Introduction:

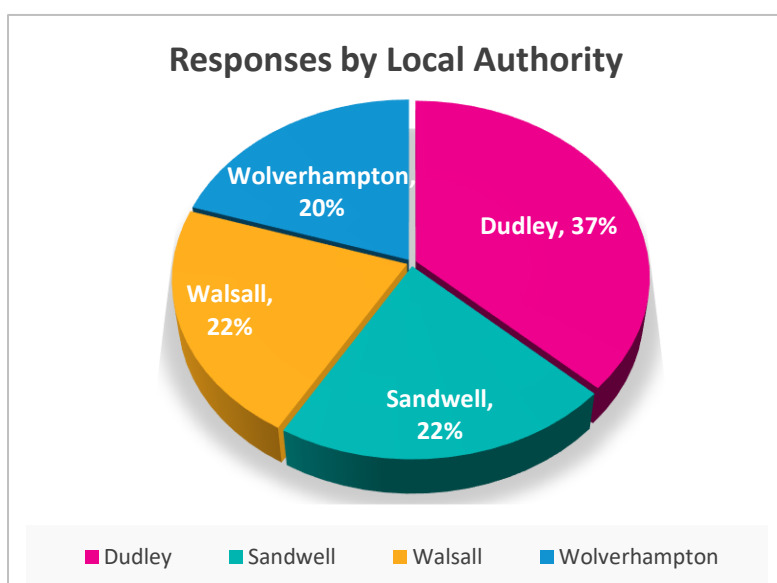
As part of the Government School Sport Action Plan, Active Black Country is one of 19 Active Partnerships in England who have been successful in securing funding from Sport England to widen access to opportunities to participate in physical activity for pupils and local communities by supporting schools to open up their sports facilities outside of the school day.

ABC will be working to ensure the development of a strong and varied offer of sport and physical activity that appeals to young people and communities, meeting local need from within more accessible school facilities. Work will focus on the least active and those from less affluent backgrounds and underrepresented groups.

The Opening Schools Facilities Survey was conducted in December 2019 with the aim of identifying schools that do not use, or only have limited access to their school sports facilities outside of the school day, identifying the barriers to opening up their premises and to begin to facilitate solutions to support schools to open to the local community.

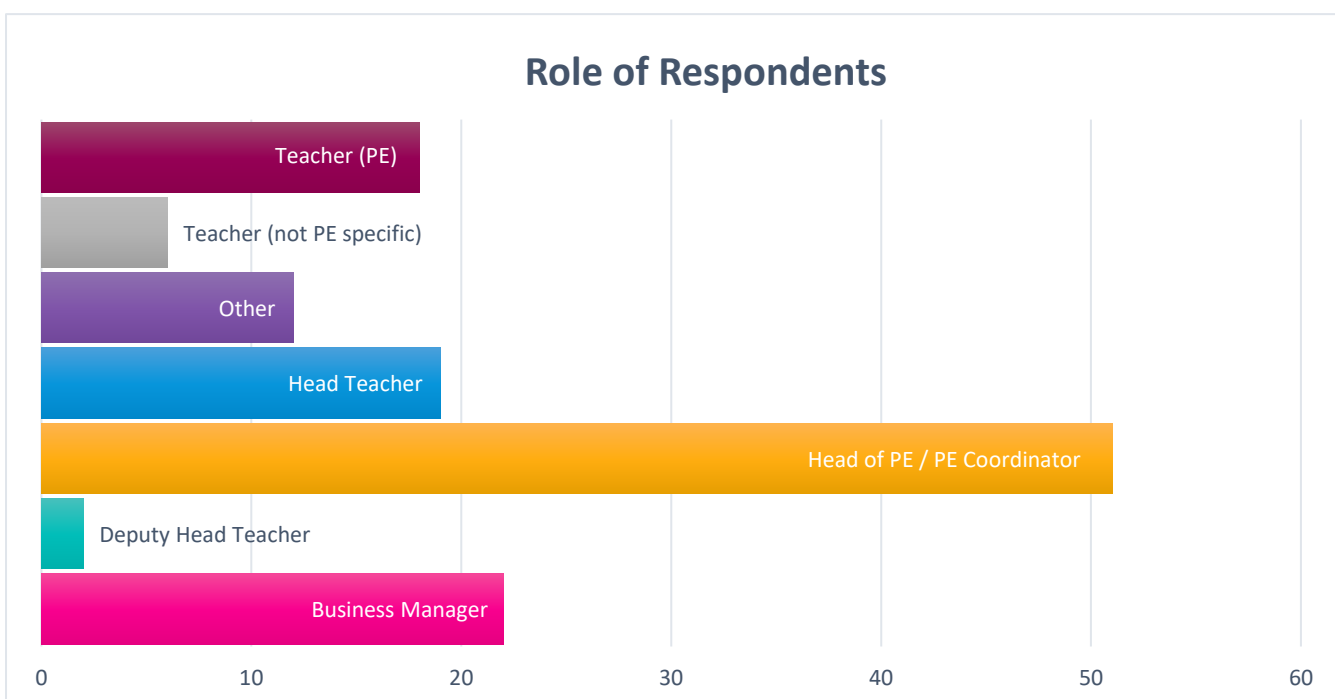
Overview of Findings:

131 schools from across the Black Country responded to the survey as follows:



Education Phase	Total Respondents
Other	2
Primary	73
Secondary	51
Special	4

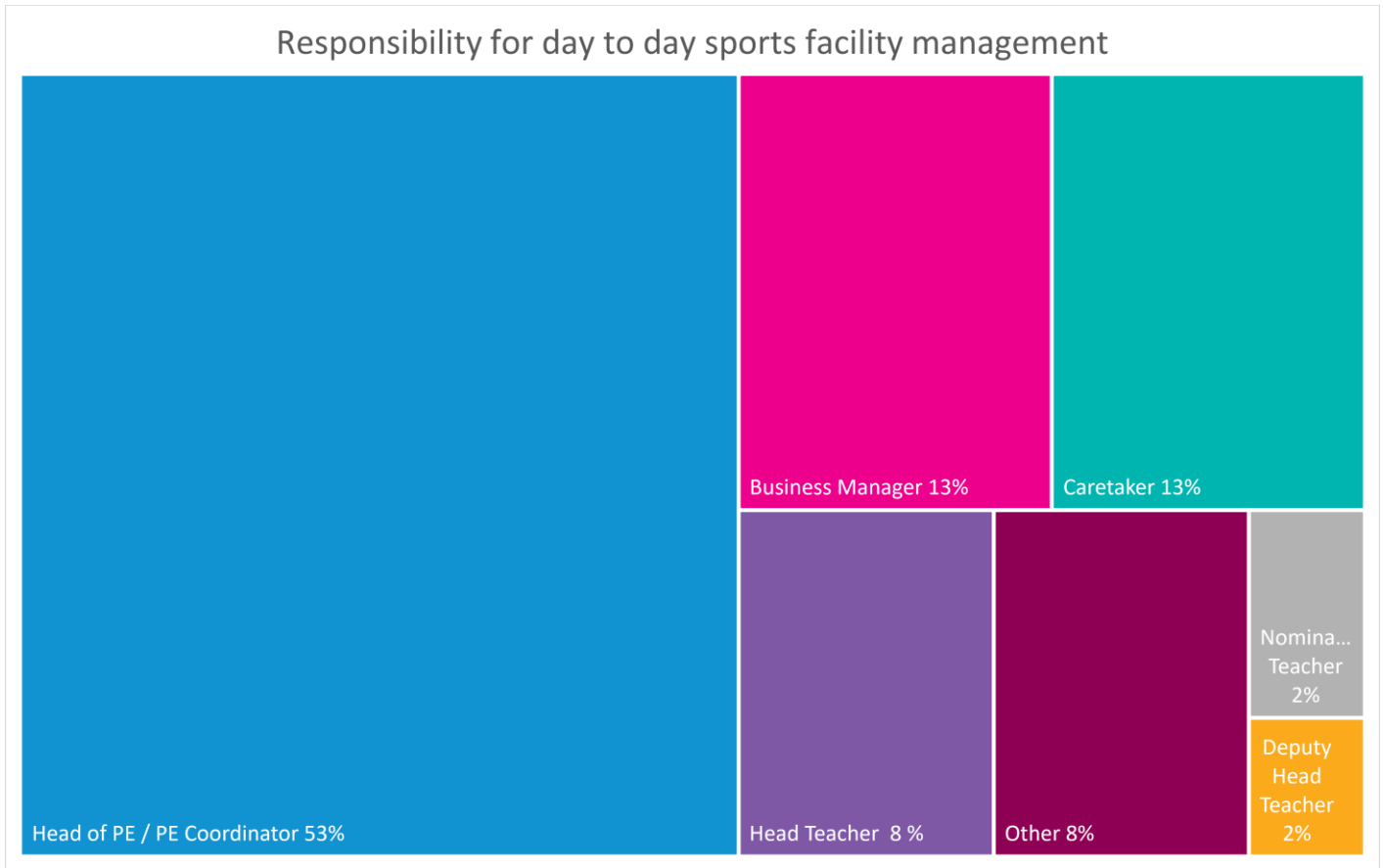
School Type	Total Respondents
Academy	23
Free School	2
Independent	1
LA Maintained	62
Multi-academy Trust	39
Other	3





Responsibility for day to day management of school sports facilities:

The table below shows the percentage split of those who have responsibility for the day to day management of sports facilities within the school. Of those schools that responded to the survey, 53% of facilities were managed by the Head of PE or the PE Coordinator.

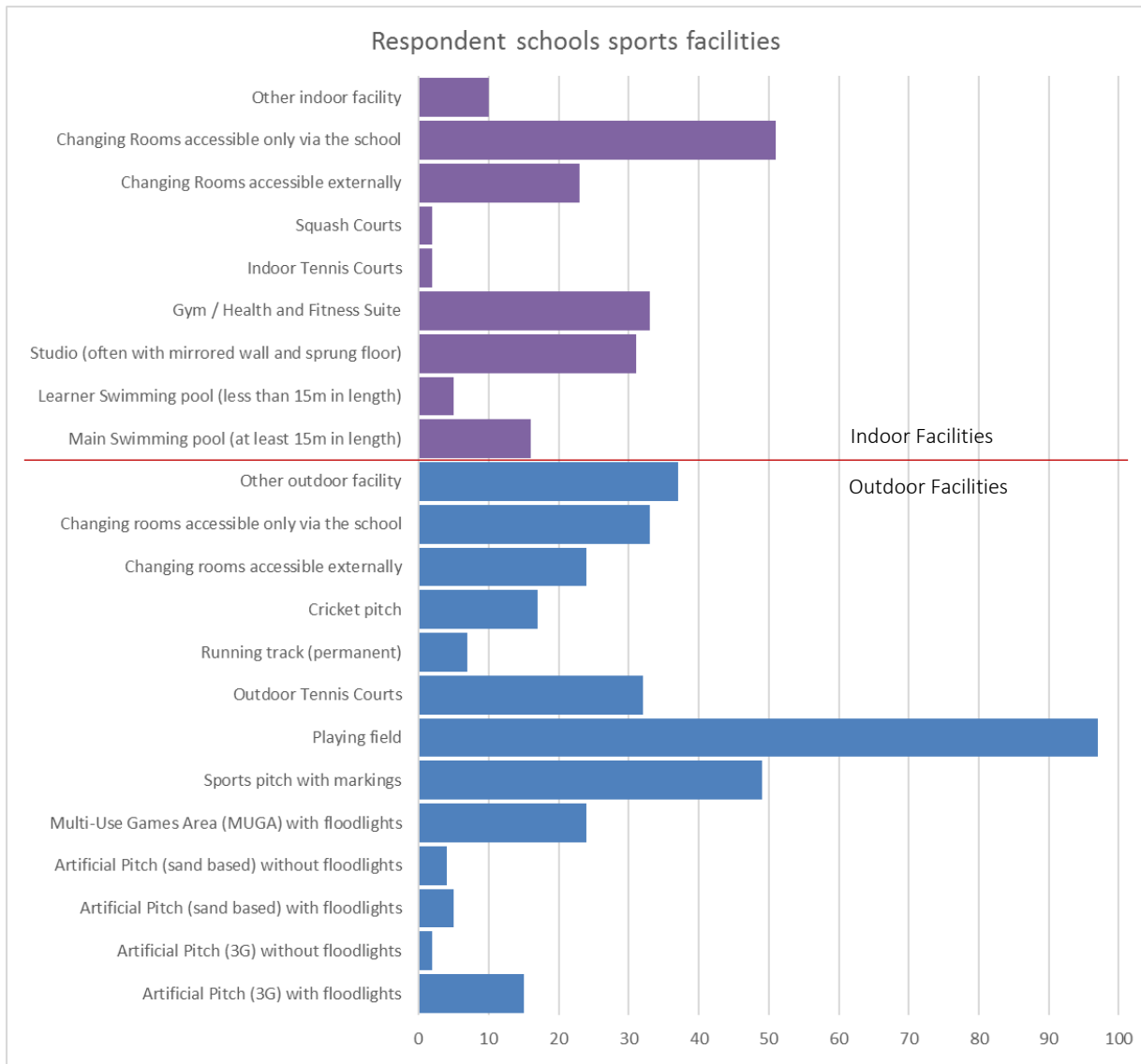


Facilities within schools:

The following table shows the facility breakdown of the respondent schools in the survey. Responses were received from 74 Primary, 55 Secondary and 4 Special Schools:

Key observations:

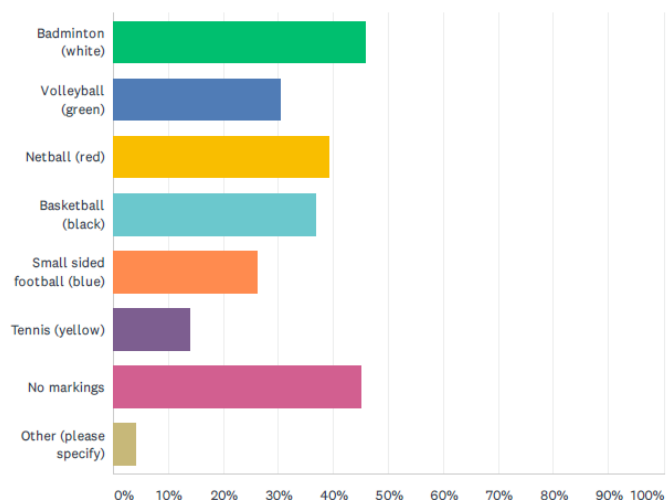
- 97 schools reported having access to playing fields, 49 had marked out sports pitches but only 23 reported to have externally accessible changing room facilities for outdoor facility use.
 - In addition, 26 schools reported having access to artificial (3G/ 4G/ sand-based) pitches.
 - 33 schools reported that they had changing rooms for outdoor facility use accessible only via the school.
- Regarding indoor facility use, 51 schools reported having changing rooms accessible only via the school building, and 23 had changing rooms accessible without having to access the school first.

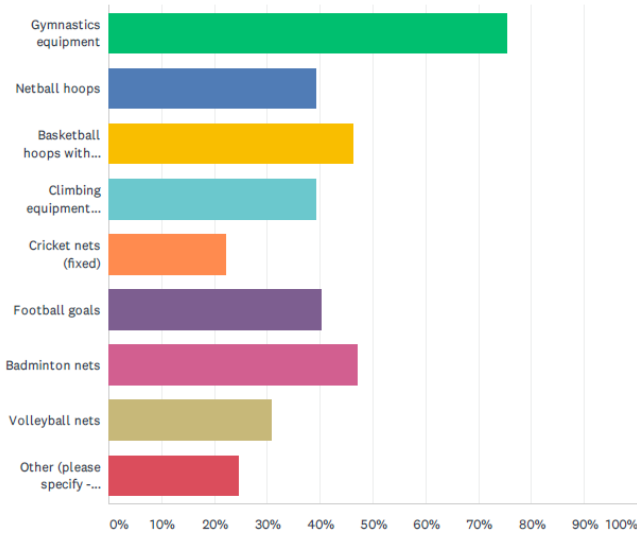


Floor Markings:

122 schools responded when asked about the court / pitch markings on their school sports / activity hall floor:

- 45% of school halls did not have any floor markings at all.
- 46% had badminton markings.
- Approximately 30% of schools had the ability to provide volleyball, netball and basketball courts and small sided football pitches.





Sports Hall Equipment:

With regard to sporting equipment available within school sports / activity halls, of the 117 schools that responded to this question;

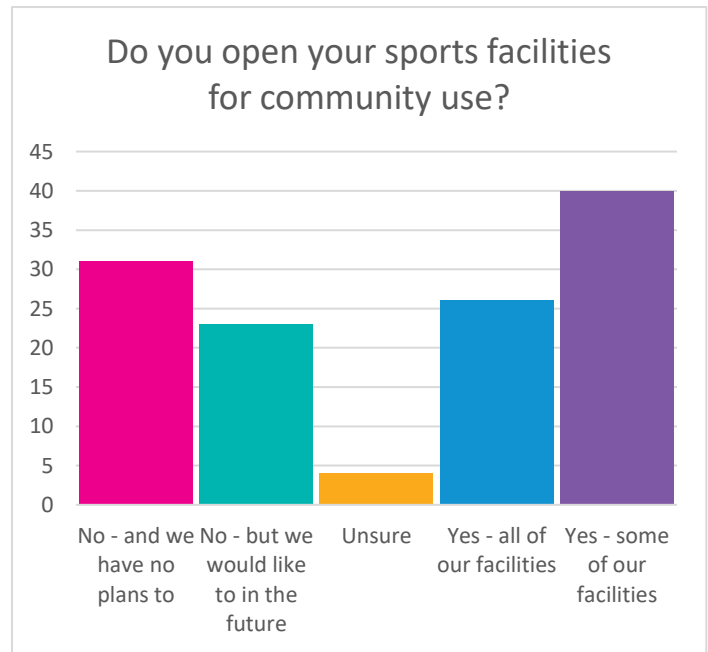
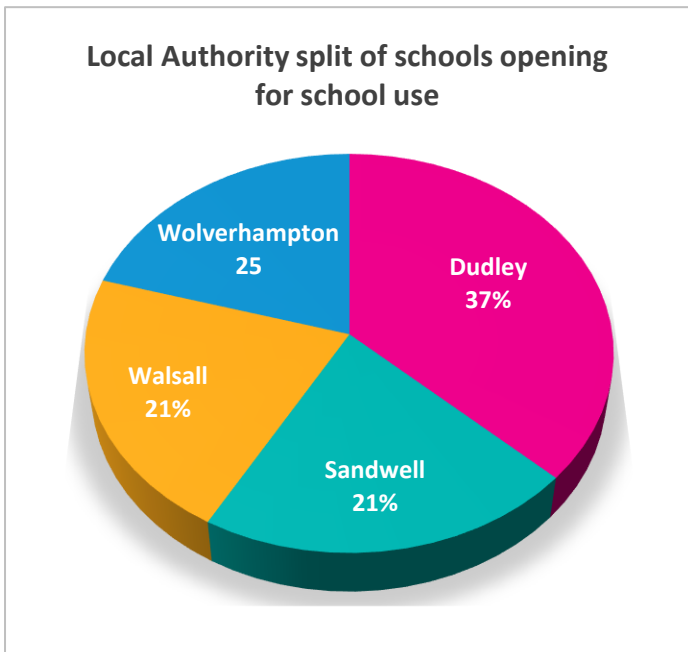
- 75% had some form of gymnastics equipment.
- 46% had the ability to provide basketball hoops and 39% netball posts.
- 40% had indoor football goals
- 47% had badminton nets and 30% had volleyball nets.

Accessibility of indoor facilities:

With regards to accessibility to indoor facilities for people with disabilities, out of the 122 respondents to this question, 88% of schools felt that *they did have sufficient accessibility*.

Schools open for community use:

Respondents from Dudley schools were most likely to report their facilities being open for community use. 21% of respondents to this question stated that they open all of their sporting facilities to the local community and just over 32% opened some but not all of their facilities. Interestingly, 18.5% of respondents would like to open to the community in the future.





School facility status:

The table below summarises the breakdown of responses to the question “Do you open your facilities for community use”?

School Type / Response	Do you open your sports facilities for community use?					Grand Total
	No - and we have no plans to	No - but we would like to in the future	Unsure	Yes - all of our facilities	Yes - some of our facilities	
Primary	21	21	3	2	24	71
Academy	3	1			3	7
Free School	1					1
Independent	1					1
Local Authority Maintained	11	15	2	1	17	46
Multi-academy Trust	5	4	1		3	13
Other				1	1	2
Secondary	7	2	1	23	13	46
Academy	1			9	5	15
Free School				1		1
Local Authority Maintained	1	1		4	3	9
Multi-academy Trust	4	1	1	9	5	20
Other	1					1
Special				1	3	4
Local Authority Maintained				1	2	3
Multi-academy Trust					1	1
Academy						
Grand Total	31	23	4	26	40	125

Of those schools that stated that they had *no plans to open in the future* (31 responses), the top three reasons were:

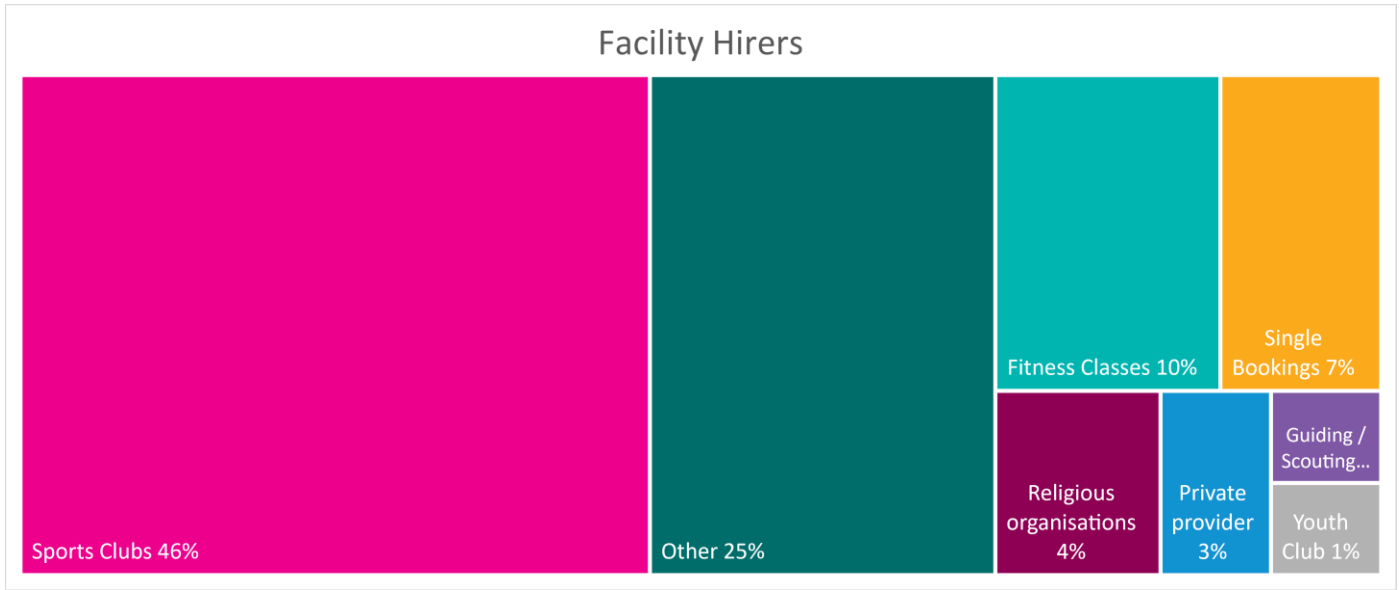
1. Caretaker not available to lock facility (15 responses)
2. Concerns regarding security (13 responses)
3. = Generally more trouble than its worth / Site layout (9 responses each)

Of schools that stated that they *did not currently open to the community but would like to in the future* (23 responses), the top three barriers were:

1. Concerns regarding security (13 responses)
2. Caretaker not available to lock facility (11 responses)
3. Concerns around child protection (7 responses)

Open facility usage:

66 schools opened some or all of their sports facilities to the community. The graph below illustrates the breakdown of hirers in these Black Country schools. Sports Clubs are the most frequent users of school sports facilities. 46% of respondents have sports clubs utilising their space. “Other” users (such as dance groups, choirs and Slimming World) were the next most common user groups.

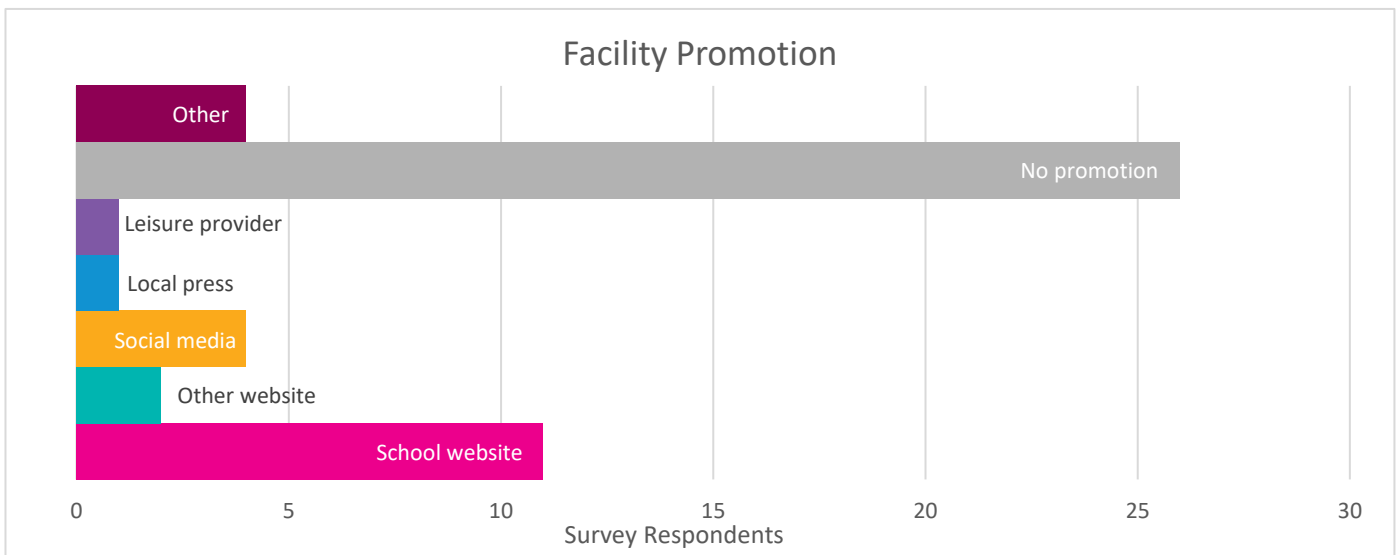


Booking arrangements:

59% of schools (39 of 66) who open *all* or *some* of their facilities managed their booking arrangements in house. Only two of the respondent schools outsourced their facility management to an external provider in the Black Country.

Promotion of facilities:

The chart below illustrates how the respondent schools currently promote the opportunity to use their sports facilities to pupils and the wider community. Notably 53% did not promote their facilities at all, only 22% featured the facilities on their own school website and only 2 schools utilised an external website to market their facility space.



What's currently working well:

Survey respondents cited a variety answers to *what was currently working well* with their school facility community hire. Bookings that work well, hirers that respect the facility and the locality of the caretaker to the school were the most common responses.

Appetite to extend community usage:

When asked; "*is there an appetite to increase the number of hours that facilities are open for community use*"? 35 schools felt they were unable to offer more community use, however encouragingly 23 schools were open to extending their opening hours for community usage.

Key findings:

131 schools across the Black Country responded to the Opening School's Facilities survey. In summary, these are the key findings:

- In the majority of schools, the Head of PE or the PE Coordinator are responsible for the day to day management of the facilities (53%).
- 97 schools reported having access to playing fields, 49 had marked out sports pitches but only 23 had externally accessible changing room facilities for outdoor facility use.
 - In addition, 26 schools had access to artificial (3G/ 4G/ sand-based) pitches.
 - 33 schools had changing rooms for outdoor facility use accessible only via the school.
- Regarding indoor facility use; 51 schools reported having changing rooms accessible only via the school building with 23 changing rooms accessible without having to access the school first.
- Approximately 30% of schools had the ability to provide volleyball, netball and basketball courts and small sided football pitches, and 46% had badminton markings in their sports hall.
- From this survey, 88% of schools felt that *they did have sufficient accessibility* to indoor facilities for those with disabilities.
- 21% stated that they opened *all* of their sporting facilities to the local community and just over 32% opened *some but not all* of their facilities. A further 18.5% of respondents would like to open to the community in the future.
- The two clear barriers for those who did not open facilities and had no plans to, and for those who currently do not open but would like to open to the community in the future were;
 - Concerns around security
 - Caretaker not available to lock the facility
- The majority of those using school facilities across the Black Country currently were sports clubs (46%).
- 53% of school facilities currently open to the community were not externally promoted and only 22% advertised their facility on their own school website.
- Encouragingly, of the 66 respondents who open their school facilities to the community, 23 were open to extending hours available for community use.

Further information:

If you are interested in finding out more about the programme and about the support Active Black Country can offer your school; please contact:

Richard Bradford (Opening Schools Facilities Programme Manager)

E: richard_bradford@blackcountryconsortium.co.uk T: +44 (0)1384 471110