

# Opening School Facilities

## Phase 2 Overview



### Dudley

#### ABC Approach

As part of the £10.1m national investment by Sport England and the Department for Education (DfE) into the Opening School Facilities agenda, Active Black Country were successful in securing investment for Phase 2 for the region.

Investment was to be utilised to facilitate activity or overcome barriers to the provision of out of school hours pupil focussed or community focussed physical activity opportunities taking place at school sites.

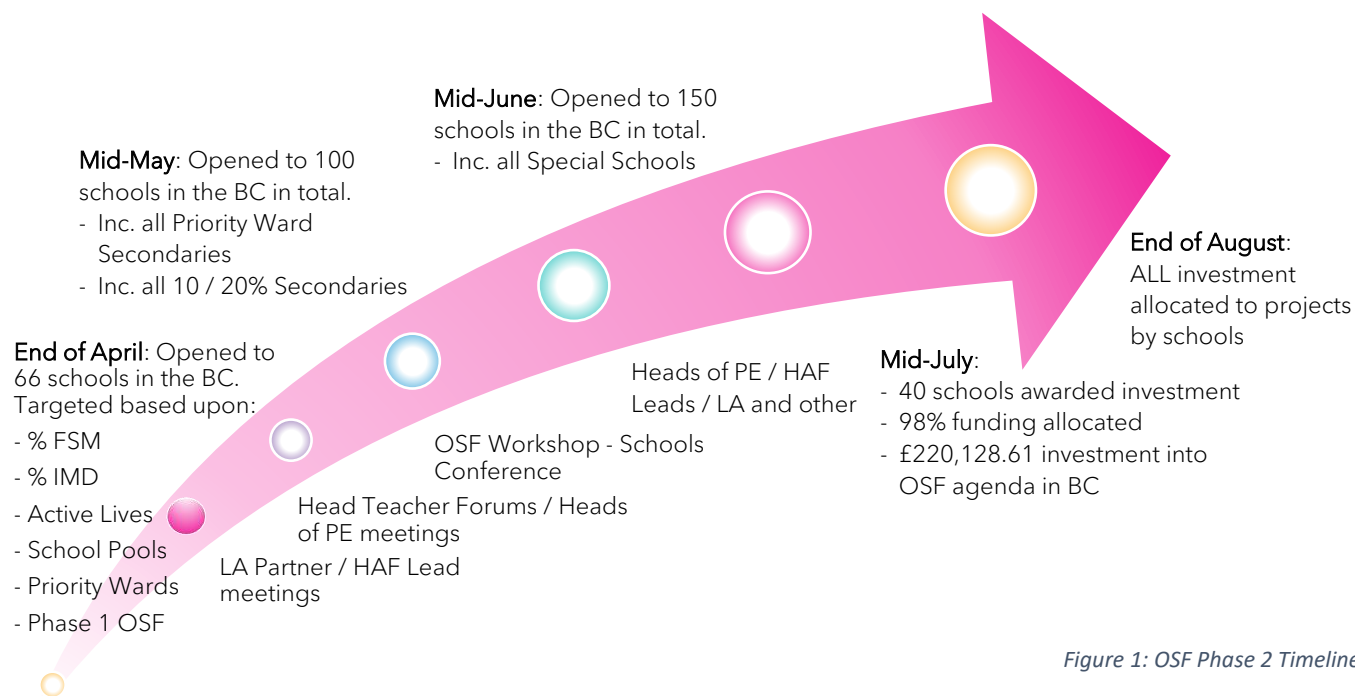


Figure 1: OSF Phase 2 Timeline

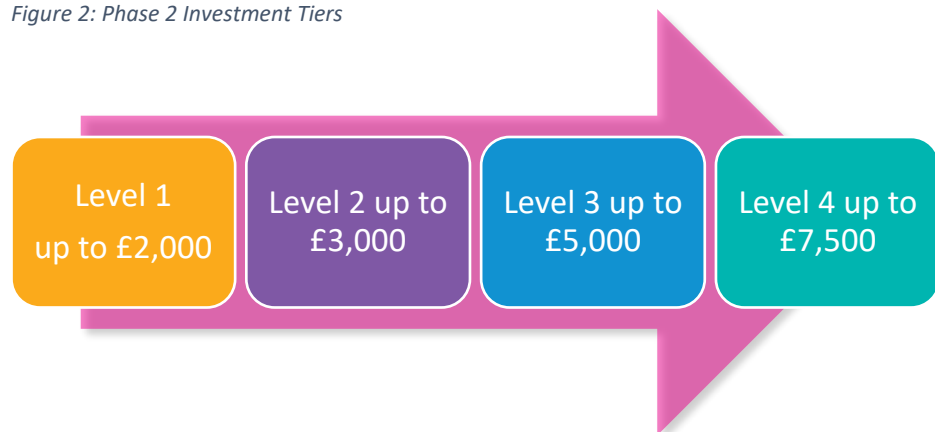
The priorities set by DfE and Sport England targeted schools with high percentage of pupils claiming free school meals, schools in areas of deprivation, inactive communities, to support holiday activity and food (HAF) projects, SEN pupil focussed projects and schools with swimming pools. ABC also targeted schools within identified key priority wards. Any investment awarded has been complimented by the offer of 1-2-1 support from the Active Black Country team.

Schools were offered the opportunity to apply for investment using a targeted and phased approach to ensure investment distribution to the areas of most need.

Timescales set by the DfE the required all funding to be distributed and spent by schools by the end of August 2021. Final approval in from Sport England came in June 2021.

Active Black Country implemented a tiered approach to investment distribution based upon the circumstances of schools against the funding parameters set out, as follows:

Figure 2: Phase 2 Investment Tiers



Schools were able to apply for awards from £2,000 up to £7,500 for revenue-based pupil or community focussed projects that encompassed the priorities set out.

Projects largely focussed on the need for additional sporting equipment to offer covid safe activity, storage solutions for this equipment, facility operational measures and in some cases activity delivery costs. The scope across of projects across the board were influenced by the timescales and capacity of schools to deliver.

The schools awarded Opening School Facilities Phase 2 investment were as follows:

School	Phase	Ward	Level £1-4	HAF Venue	Project Outline
Crestwood Park Primary School	Primary	Kingswinford South	1	Yes	Sports equipment: Boxing and archery for pupil premium children as part of a holiday club and subsequent after school activity to promote inclusion.
Crestwood School	Secondary	Kingswinford South	4		Sports and health & safety equipment: Rugby focus and health and safety requirements.
Ellowes Hall Sports College	Secondary	Gornal	3		Sports equipment: Community groups focus - walking, running and orienteering.
Hawbush Primary School	Primary	Brierley Hill	4	Yes	Sport and storage equipment: HAF projects and ongoing community use.
Hurst Green Primary School	Primary	Halesowen North	1	Yes	Sports equipment: HAF projects and further community use.
Kates Hill Primary School	Primary	St. Thomas's	3	Yes	Sports equipment: HAF projects and further community use.
Leasowes High School	Secondary	Halesowen South	3		Sports equipment: SEND project focus for extra-curricular activities.
Netherton C of E Primary School	Primary	Netherton, Woodside and St. Andrews	4	Yes	Sports equipment and storage: HAF project support and further community work.
Pedmore Technology College and Community School	Secondary	Pedmore and Stourbridge East	4		Sports equipment and storage: To support out of hours sessions with vulnerable pupils / adults from local community
Red Hall Primary School	Primary	Gornal	3		Sports equipment: To support after school provision for pupils
Rufford Primary School	Primary	Lye and Stourbridge North	3		Sports and health & safety equipment: To support community use of pitches.
Sledmere Primary School	Primary	St. Thomas's	3		Sports equipment and storage for after school clubs
Green Hill Alternative Learning Campus	PRU	Halesowen South	3		Sports equipment: Outdoor circuits and fitness training. Session delivery costs.

The map below highlights the location of these schools against the areas ranked in the top 10% and 20% most deprived from the indices of multiple deprivation (2019):

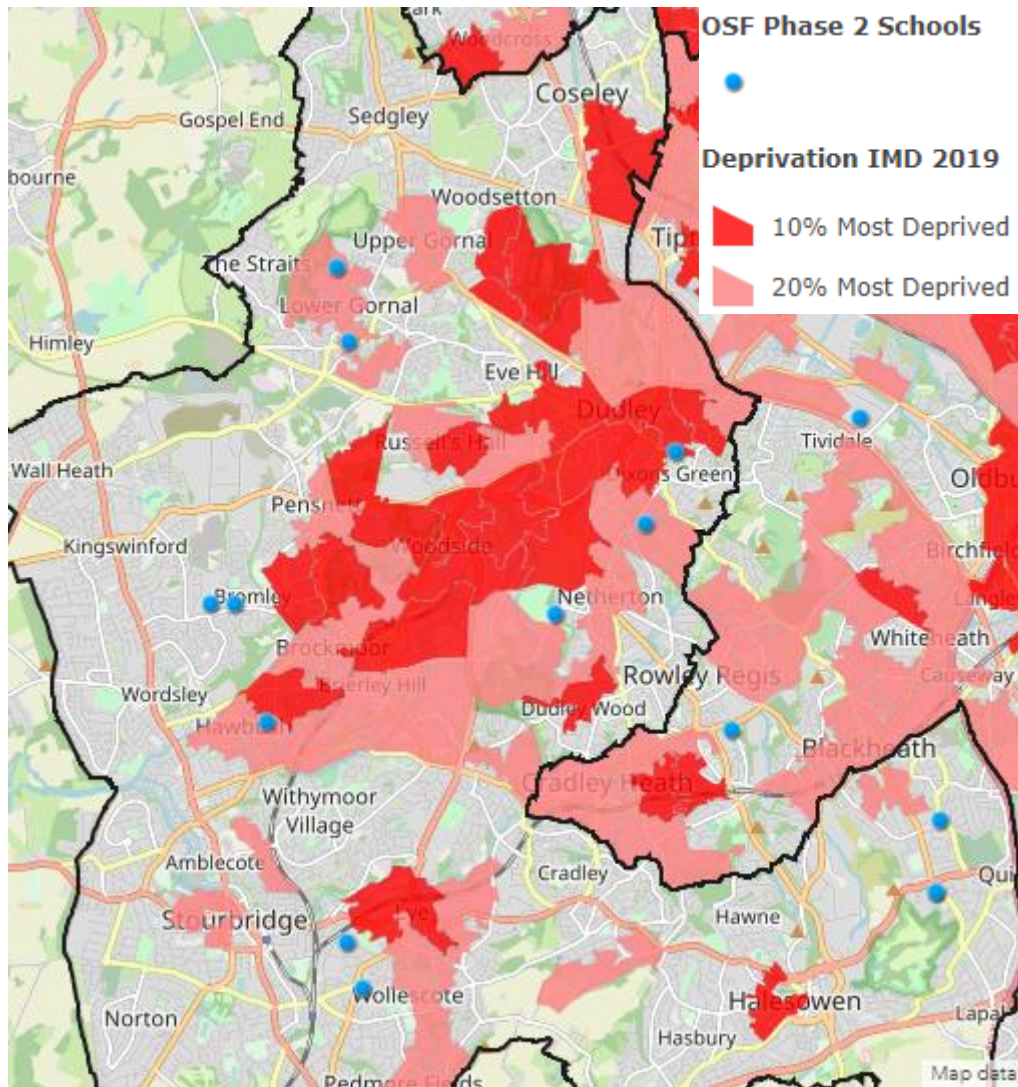


Figure 3: OSF Phase 2 Schools against IMD 2019

### Next Steps

Active Black Country, as part of the Opening School Facilities Programme is working with schools identified so far to collate a bank of case studies from the Phase 2 investment, and to advance bespoke Community Development Plans to structure conversations and work through objectives set in relation to community use ambitions. The OSF agenda remains a high priority of the DfE, and as such we are hopeful of further investment in this area, which we are working with Sport England to shape.

### Further information

For any further information on the Active Black Country Opening School Facilities Programme, please contact:

Richard Bradford

(Opening School Facilities Programme Manager)

E: [Richard\\_bradford@blackcountryconsortium.co.uk](mailto:Richard_bradford@blackcountryconsortium.co.uk)

T: 07944 268731