

Opening School Facilities

Phase 2 Overview



Walsall

ABC Approach

As part of the £10.1m national investment by Sport England and the Department for Education (DfE) into the Opening School Facilities agenda, Active Black Country were successful in securing investment for Phase 2 for the region.

Investment was to be utilised to facilitate activity or overcome barriers to the provision of out of school hours pupil focussed or community focussed physical activity opportunities taking place at school sites.

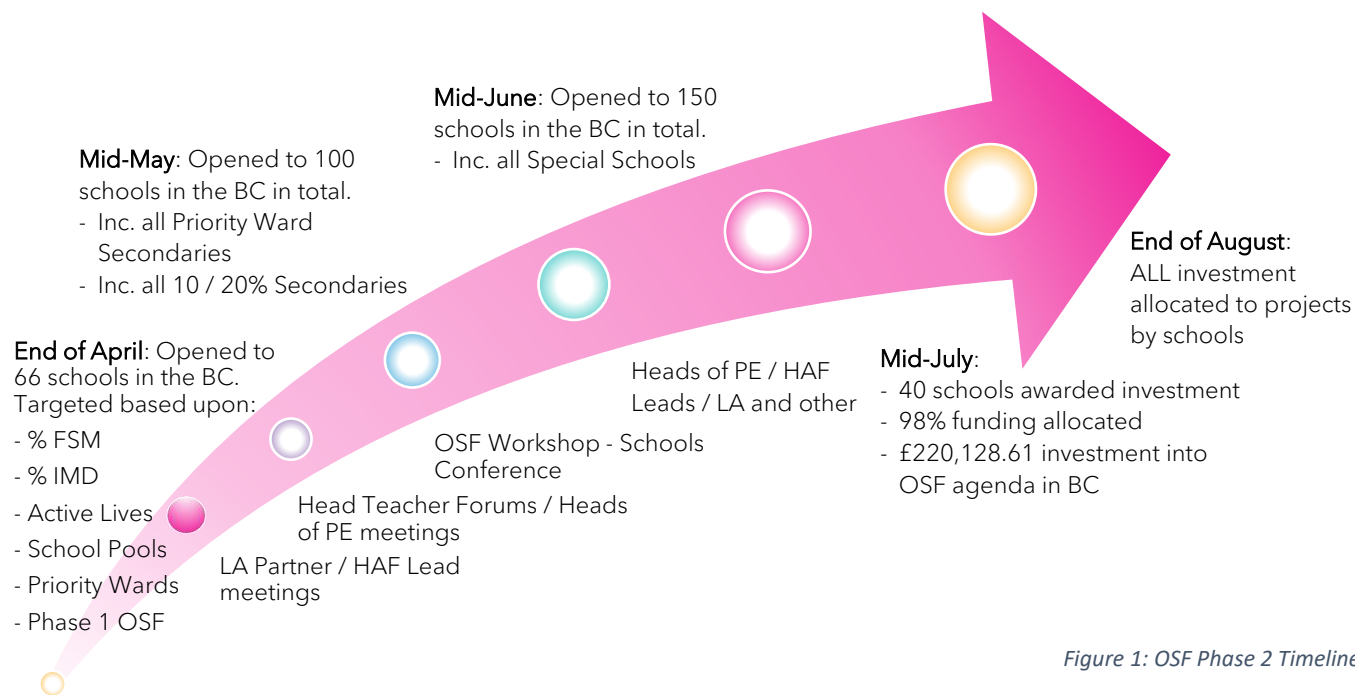


Figure 1: OSF Phase 2 Timeline

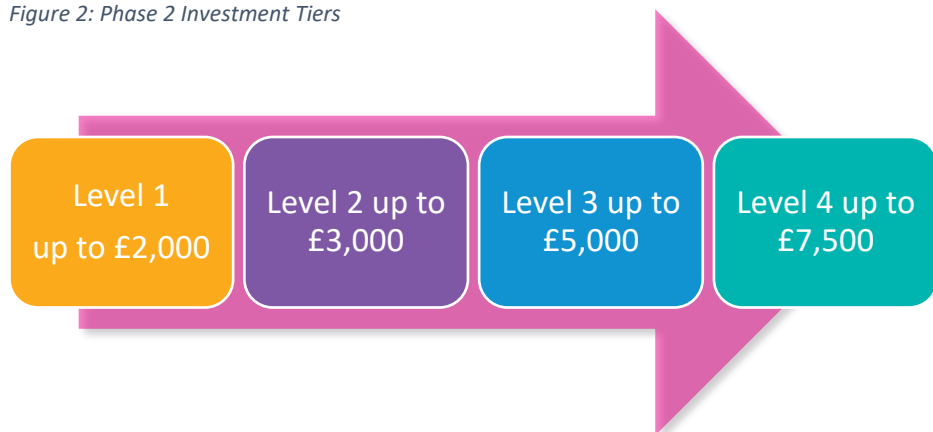
The priorities set by DfE and Sport England targeted schools with high percentage of pupils claiming free school meals, schools in areas of deprivation, inactive communities, to support holiday activity and food (HAF) projects, SEN pupil focussed projects and schools with swimming pools. ABC also targeted schools within identified key priority wards. Any investment awarded has been complimented by the offer of 1-2-1 support from the Active Black Country team.

Schools were offered the opportunity to apply for investment using a targeted and phased approach to ensure investment distribution to the areas of most need.

Timescales set by the DfE the required all funding to be distributed and spent by schools by the end of August 2021. Final approval in from Sport England came in June 2021.

Active Black Country implemented a tiered approach to investment distribution based upon the circumstances of schools against the funding parameters set out, as follows:

Figure 2: Phase 2 Investment Tiers



Schools were able to apply for awards from £2,000 up to £7,500 for revenue-based pupil or community focussed projects that encompassed the priorities set out.

Projects largely focussed on the need for additional sporting equipment to offer covid safe activity, storage solutions for this equipment, facility operational measures and in some cases activity delivery costs. The scope across of projects across the board were influenced by the timescales and capacity of schools to deliver.

The schools awarded Opening School Facilities Phase 2 investment were as follows:

School	Phase	Ward	Level £1-4	HAF Venue	Project Outline
Abbey Primary School	Primary	Bloxwich West	4	Yes	Sports equipment: for HAF project; and ongoing after school clubs.
Blue Coat Church of England Academy	Secondary	St. Matthew's	3		Sports equipment: to support additional extra-curricular clubs.
Goldsmith Primary Academy	Primary	Blakenall	4	Yes	Sports and storage equipment: to support HAF project and future community provision.
Pinfold Street Primary School	Primary	Darlaston South	4	Yes	Storage and sports equipment: for HAF project, after school and community use.
Queen Mary's Grammar School	Secondary	Paddock	3	Yes	Sports equipment: to support Active Stars programme before/ after school - for poorer students.
Reedswood E-ACT Academy	Primary	Pleck	3		Swimming: Pool cover and pool plant servicing required to re-open pool to pupils, schools, community.
St James Primary School	Primary	Brownhills	2		Swimming: Pool equipment, signage and cleaning to meet covid regs
The Streetly Academy	Secondary	Streetly	3	Yes	Security measures and signage to improve community provision for swimming pool area, netball and astro-turf. Pool water testing to enable re-start of swimming provision.
West Walsall EACT Academy	Secondary	Pleck	4		Swimming: Pool cover required to re-open pool to pupils, schools, community
Willenhall E-ACT Academy	Secondary	Short Heath	4	Yes	Swimming: Pool cover required to re-open pool to pupils, schools, community

The map below highlights the location of these schools against the areas ranked in the top 10% and 20% most deprived from the indices of multiple deprivation (2019):

OSF Phase 2 Schools



Deprivation IMD 2019



10% Most Deprived



20% Most Deprived

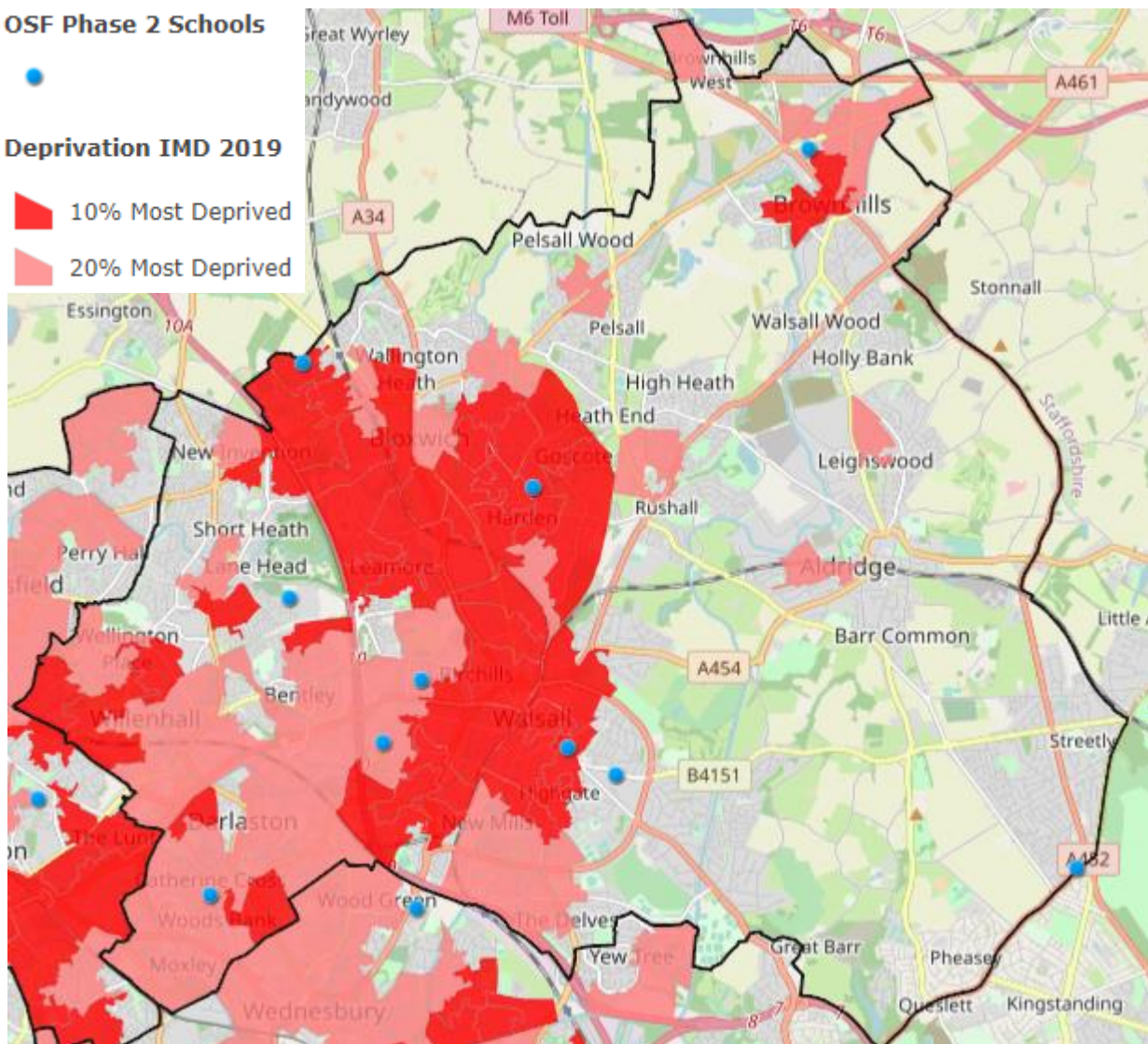


Figure 3: OSF Phase 2 Schools against IMD 2019

Next Steps

Active Black Country, as part of the Opening School Facilities Programme is working with schools identified so far to collate a bank of case studies from the Phase 2 investment, and to advance bespoke Community Development Plans to structure conversations and work through objectives set in relation to community use ambitions. The OSF agenda remains a high priority of the DfE, and as such we are hopeful of further investment in this area, which we are working with Sport England to shape.

Further information

For any further information on the Active Black Country Opening School Facilities Programme, please contact:

Richard Bradford

(Opening School Facilities Programme Manager)

E: Richard_bradford@blackcountryconsortium.co.uk

T: 07944 268731